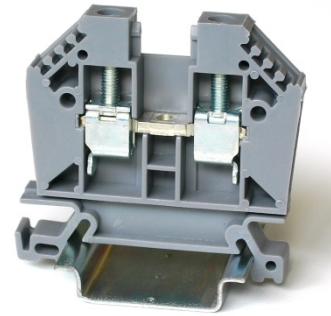




# EURO 6

Article: **43401**

Feed-through terminal block - Grey  
 Screw connection - 6mm<sup>2</sup> / 8AWG - Width 7 mm



## GENERAL DATA

|                |                 |
|----------------|-----------------|
| Series         | <b>EURO 6</b>   |
| Item           | <b>43401</b>    |
| Weight/Piece   | <b>13,6 g</b>   |
| Catalog        | <b>01</b>       |
| Customs tariff | <b>85369095</b> |
| Colour         | <b>Grey</b>     |
| Q.ty p.pck.    | <b>50</b>       |
| Q.ty p. box    | <b>1.000</b>    |

## TECHNICAL DATA / DIMENSIONS

### Dimensions

|                          |            |
|--------------------------|------------|
| Width mm                 | 7 mm       |
| Length mm                | 50 mm      |
| Height mm                | 44 mm      |
| Mounting type (EN 60715) | Omega TH35 |

### Technical data

|   |       |
|---|-------|
| Maximum load current  | 50A   |
| Insulating material   | PA    |
| Self-extinguishing degree acc. to UL94                        | V0    |
| Rated surge voltage   | 8kV   |
| Pollution degree  | 3     |
| Surge voltage category  | III   |
| Insulating material group                                     | I     |
| Nominal Voltage   | 1000V |
| Nominal Current   | 41A   |
| Temperature index, insulating material – Elec. UL 746 B - RTI | 130°C |
| Static insulating material lower permissible temperature      | -60°C |

### Connection data

|  |                           |
|--|---------------------------|
| Conductor cross-section solid min/max    | 0.50 / 10 mm <sup>2</sup> |
| Conductor cross-section stranded min/max | 0.50 / 6 mm <sup>2</sup>  |



|   |                          |
|---|--------------------------|
| AWG min/max   | 22-8AWG                  |
| Max conductor cross-section stranded with ferrule with plastic sleeve DIN 46228/4 | 6 mm <sup>2</sup> / L=18 |
| Stripping length  | max 12 mm / 0.475in      |
| Screw   | M3,5 – Zinc plated steel |
| Tightening torque   | 0,8Nm / 10 Lb-In         |
| Clamp   | Zinc plated steel        |
| Current bar   | Tin Plated copper alloy  |

## APPROVALS



40016498

REG B573

**EN60947-7-1**6mm<sup>2</sup> – 1000V – 41A**EN60068-2-11**

Salt mist test for 96 hours

**ENEL DV27****UL1059**

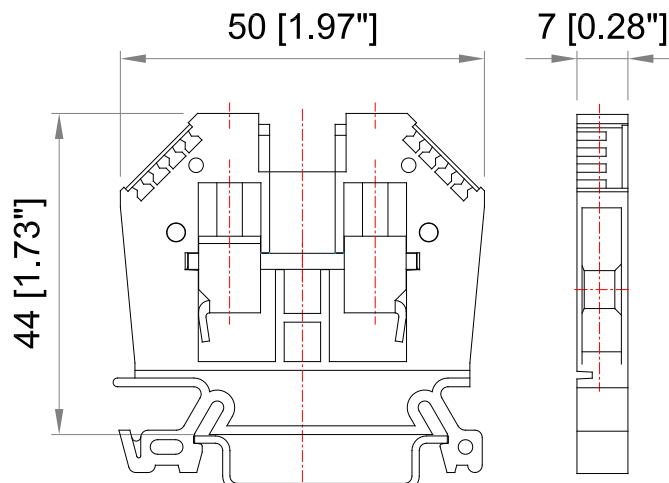
E203985

*Not suitable for Compact Stranded*

AWG 22-8 – 600V – 50A

**SCCR** 100kASee: <https://iq.ulprospector.com/en/profile?e=167250>

## TECHNICAL DRAWINGS



43401



## ACCESSORIES

### Marking

| Item                     | Description   |
|--------------------------|---|
| <b>43059</b>             | Single-digit marking tag (5 x 3 mm) - white                   |
| <b>43060/0 ÷ 43060/9</b> | Single-digit marking tag (5 x 3 mm) – with marking: 0 ÷ 9     |
| <b>43060/A ÷ 43060/Z</b> | Single-digit marking tag (5 x 3 mm) – with marking: A ÷ Z     |
| <b>43094</b>             | Marking tag adapter – 6 slots for marking tags                |
| <b>43192</b>             | Marking tags (5 x 12 mm) - white (special marking on request) |
| <b>43196</b>             | Marking tags (6 x 12 mm) - white (special marking on request) |
| <b>438MFC0612TB</b>      | Tags 6x12 for MI and 438MWK0512TBA (39tags x 20cards)         |
| <b>438MWK0512TBA</b>     | Tag adapter for: MI-EURO/Weid-WDU-ZDU/Klemsan -1box=250       |

### DIN RAIL system - Mounting and Installation material

| Item           | Description                                      |
|----------------|--|
| <b>43910</b>   | Steel Omega rail 35/7,5mm - 2mt length           |
| <b>43910/F</b> | Slotted steel Omega rail 35/7,5mm - 2mt length   |
| <b>43911</b>   | Steel Omega rail 35/15mm - 2mt length            |
| <b>43911/F</b> | Slotted steel Omega rail 35/15mm - 2mt length    |
| <b>43028</b>   | Angled support bracket                           |
| <b>43442</b>   | EURO STOP - End bracket width 9                  |
| <b>43444</b>   | EURO STOP - End bracket width 6                  |
| <b>43447</b>   | EURO STOP - Snap-on end bracket width 6          |
| <b>43448</b>   | EURO STOP – Tag Carrier for TH35 or TH15 DinRail |
| <b>43449</b>   | EURO STOP - End bracket cover profile carrier    |
| <b>43449-C</b> | EURO STOP - Cover profile - Length 100cm         |

### Additional items

| Item            | Description   |
|-----------------|---|
| <b>43011</b>    | End plate   |
| <b>43016</b>    | Separator   |
| <b>43031</b>    | Cover for EURO 6 - 10   |
| <b>43621/02</b> | Insulated 2 poles screw-jumper -pitch 7,1mm -6mm2 1bag=50pcs  |
| <b>43621/03</b> | Insulated 3 poles screw-jumper -pitch 7,1mm -6mm2 1bag=50pcs  |
| <b>43621/24</b> | Insulated 24 poles screw-jumper-pitch 7,1mm-6mm2-(1box=5pcs)<br>- (5_jumpers + 120_screws + 10_insulating body) |